

BOUGHEN NURSERIES LTD.

EST 1937

Making Greener Spaces Every Day!



2026 Retail Catalogue

DEAR FRIENDS

We are pleased to provide our catalogue for this season. We pride ourselves on offering a quality selection of prairie hardy nursery stock. We are so thankful for the many relationships we've formed with our customers over almost 90 years! We thank you for your business and look forward to partnering with you in the future.

Boughen Nurseries Ltd. is a retail and wholesale outlet. There are many garden centers and nurseries who sell our products throughout Western Canada. If you're interested in doing the same, we would be pleased to speak with you.



PLACE YOUR ORDER NOW FOR
SPRING PICKUP OR SHIPPING

ORNAMENTAL & SHADE TREES

ASH

Purchase Size 6'

European Mountain – Popular ornamental. White spring flowers turn into red-orange berries, attracts song birds. - Mature height 6 m \$62.95

Manchurian/Mancana – Shade tree with large leaflets that lend it an exotic look. Unique. - Mature height 10 m \$109.95

Patmore – Great large, seedless shade tree. - Mature height 12 m \$109.95

Prairie Spire – A narrow, seedless, low maintenance shade tree. Perfect for smaller properties. - Mature height 15 m \$84.95



ASPEN

Purchase Size 4'-5'

Prairie Skyrise – Compact, columnar branching makes this a great privacy screen for small yards. - Mature height 12 m \$84.95

Swedish Columnar Aspen – Very slender, cottonless tree. New top growth often has red leaves. - Mature height 12 m \$78.95



BIRCH

Purchase Size 4'-6'

Weeping – Popular shade tree with white bark and dark green serrated leaves. Extensive weeping habit. - Mature height 15 m \$109.95

White – Native tree – White peeling bark. Fall leaves turn brilliant yellow. - Mature height 15 m \$88.95

Dakota Pinnacle – Columnar almost pinnacle shape. Lovely accent tree is hardy, insect resistant and drought tolerant. - Mature height 12 m \$92.95



ORNAMENTAL & SHADE TREES

CARAGANA

Common Caragana - Makes a tough durable hedge, excellent for dry areas. Trim once a year for best appearance. Plant 50 cm apart. \$

Walker Weeping – Weeping branches are top-grafted onto 3' trunk creating trailing branches that weep toward the ground. Purchase size 4-5' \$109.95

FLOWERING CHERRY Purchase size 5'-6'

Schubert – White blossoms become edible chokecherry like fruit good for wine and jelly. Mid-June, leaves turn purple making a great accent tree. Mature height – 7 m \$92.95

FLOWERING CRAB Purchase Size 6'-8'

Gladiator – A pretty tree with glossy purple leaves, pink flowers and small purple ornamental fruit. - Mature height 7 m \$94.95

Thunderchild – Compact upright growth. Pinkish red flowers with purple leaves. Very showy. - Mature height 5 m \$94.95

White – White spring flowers. Marble-size fruit attracts birds, often from the grouse family. Good pollinator of apple and crabapple trees. - Mature height 6 m \$94.95

Pink Spires - Upright ornamental tree with showy rose-pink flowers in spring followed by persistent bright red fruit in fall. - Mature height 6 m \$94.95



ORNAMENTAL & SHADE TREES

LINDEN

Purchase Size 5'-7'

American Big Leaf or Basswood – Fast growing shade tree has huge leaves. Fragrant yellow flowers in early July. - Mature height 15 m \$94.95

Dropmore – Tall, stately, pyramidal shape has fragrant yellow flowers in early summer. Low maintenance, extremely hardy and very adaptable. - Mature height 7.5 m \$94.95

Little Leaf – Fast-growing linden with a dense oval head. Shiny coppery-brown bark and fragrant yellow flowers. - Mature height 8 m \$94.95

Greenspire – Regal spire-like shape, this is a tidy, low maintenance tree. Excellent lawn specimen. - Mature height 15 m \$94.95



MAPLE

Amur – Summer leaves are dark green with red veins. Known for its brilliant red fall color. - Mature height 5 m \$58.95

Manitoba – A fast-growing native shade tree that's often used in shelterbelts or on boulevards. - Mature height 15 m - Purchase size 4 to 6' \$64.95

Silver – Large tree with light green leaves that have a silvery underside. Good yellow fall color. - Mature height 15 m - Purchase size 5 to 7' \$109.95



MAYDAY TREE

Purchase size 5 to 7'

Mayday Tree - Fragrant white flowers appear in May followed by chokecherry-like fruit. Fall color is orange/red. - Mature height 8 m \$92.95

OAK

Bur – Trunk and branches have a cork appearance. Large dark green leaves. Drought tolerant. - Mature height 15 m - Purchase size 5 to 6' \$109.95

Ohio Buckeye – Similar to European Horsechestnut. Large, compound leaves with clusters of yellow green flowers in spring. Large brown seeds often called 'conkers. - Mature height up to 15 m - Purchase size 5-7' \$94.95

ORNAMENTAL & SHADE TREES

POPLAR - Hybrid Cottonless

Assiniboine – Rapid-growing with horizontal branching. - Mature height 20 m - Purchase size 4 to 6' \$64.95

Brooks – Grows fast and wide. An excellent windbreak tree. - Mature height 18 m - Purchase size 4 to 6' \$64.95

Northwest – Hardy, wide, fast-growing cottonless variety with large leaves, this tree is long-lived. - Mature height 18 m - Purchase size 4 to 6' \$64.95

Okanese – Winter-hardy, drought resistant hybrid that is also fast-growing. Glossy green leaves turn yellow in fall. Great shelterbelt or privacy screen.- Mature height 12 - 18 m - Purchase size 4 to 6' \$64.95

Prairie Sky – Narrow upright growing form. - Mature height 15 m - Purchase size 4 to 5' \$64.95

Sundancer - fast-growing, cold-hardy, known for its narrow, columnar shape, making it excellent for windbreaks and tight spaces. - Mature height 10-12 m Purchase size 4 to 6' \$64.95

Tower – Very fast-growing narrow tree. Leaves are dark green on top with silver undersides. - Mature height 10 m - Purchase size 4 to 6' \$64.95



WILLOW

Golden – Golden branches remain attractive even after the leaves fall off. - Mature height 15 m - Purchase size 2-3' \$38.95

Laurel – Fast-growing with dark green shiny leaves. - Mature height 10 m - Purchase size 2-3' \$38.95

Silver – Beautiful shade tree with reddish brown bark and long narrow silver-blue leaves. - Mature height 15 m - Purchase size 7' \$109.95

ORNAMENTAL SHRUBS

Barberry Rose Glow – Striking rose red leaves mottled with pink and white. Pale-yellow spring flowers. Red berries in fall. - Mature height 3' - Purchase size approx. 1' to 2' \$42.95



Blue Fox Willow – Adaptable, hardy for borders or hedges. Blue-gray foliage. - Mature height 90 cm - Purchase size 1' to 2' \$42.95

Buffalo Berry – Good contrast shrub. Thorny. Gray foliage with red fruit in fall; attracts birds. - Mature height 90 cm - Purchase size 1 to 2' \$42.95

Burning Bush – Dwarf-winged – This narrow-leaved, shade tolerant plant turns red/bronze in fall with pink seeds. - Mature height 80 cm - Purchase size 1' to 2' \$42.95



Globe Caragana – Dwarf - plant has round shape without pruning. Good substitute where globe cedar won't grow. - Mature height 4' - Purchase size 1' to 2' \$42.95

Compact Cranberry – Compact form of native highbush cranberry. Dark green foliage. - Mature height 4' - Purchase size 1' \$42.95

Currant – Alpine – Dense plant with bright green leaves. Great for hedging. - Mature height 4' - Purchase size 1' to 2' \$42.95

Currant – Golden – Maple-like leaves. The appearance of sweetly scented tubular yellow flowers in April is a first sign of spring. - Mature height 125 cm - Purchase size 2' \$42.95

ORNAMENTAL SHRUBS

DOGWOOD

Ivory Halo – Unique and very hardy. Variegated white and green leaves contrast with red branches. Striking in winter. - Mature height 150 cm \$42.95

Morden Amber – Four season color from this shrub: amber-yellow foliage all summer, great fall color and showy red stems in winter. - Mature height 150 cm \$42.95

Red Osier – A truly hardy native shrub. Green leaves with red bark. Grows larger than Siberian Dogwood. Makes a unique hedge. - Mature Height 2 - 3 m \$42.95

Siberian Red – Clusters of white flowers in spring turn into white berries midsummer, attracting birds. Green leaves turn to red/purple in fall. - Mature height 175 cm \$42.95

Silver Leaf – Colorful and extremely hardy. White-variegated grayish green foliage emerges yellow in spring. Dark red stems in winter. - Mature height 125 cm \$42.95

ELDER

Golden – Fast-growing shrub with yellow foliage and small red berries. - Mature height 175 cm \$42.95

Red – Large white blossoms turn to clusters of bird-attracting red fruit in fall. Fast-growing. - Mature height 4 m \$42.95

FORSYTHIA

Northern Gold – From Morden Research Station. Bright yellow flowers in spring before leaves appear. Winter hardy. - Mature height 125 cm \$42.95

HONEYSUCKLE

Arnold's Red – Abundant red flowers turn into small red berries in summer feature on this attractive shrub. - Mature height 3 m \$42.95

Dropmore – An extremely hardy vine valued for its showy red/orange trumpet flowers. Easy to grow. Attracts hummingbirds. - Mature height 2.5 m \$42.95

Miniglobe – A compact shrub with yellow/white flowers and dark red berries. - Mature height 80 cm \$42.95

Dwarf Honeybee – Brilliant gold to chartreuse green with clusters of small yellow flowers popular with bees and butterflies. Great in shrub borders, mass plantings and containers. Mature Height – 1 m. \$42.95

ORNAMENTAL SHRUBS

HYDRANGEA

Annabelle – Always a favorite! Dark green foliage with long-lasting white flowers. - Mature height 1 m \$49.95

Fire & Ice – You'll have a parade of color with this cold hardy variety. Creamy white spring flowers against bright green foliage change to soft pink blooms that darken to burgundy fall red. - Mature height 150 cm \$49.95

Fire Light – Easy to grow variety with huge creamy white blooms on sturdy strong stems. Flowers age to vivid red for lots of summer color. - Mature height 150 cm \$49.95

Incrediball Blush – Incrediball hydrangeas are loved for their stout stems and massive blooms. This variety shows huge lowers in a beautiful silvery-pink, reblooming over and over. - Mature height 150 cm \$49.95

Incrediball – Valued for its upright stems that don't flop. Huge white rounded flower clusters. - Mature height 125 cm \$49.95

Invincibelle Ruby – Dark burgundy buds open to reveal flowers of burgundy and pink. - Mature height 125 cm \$49.95

Lime Light – Large flowers on strong stems. Starts out with lime green blooms and ages to hues of cream, pink, red and burgundy. - Mature height 150 cm \$49.95

Little Lime – A container-sized dwarf hydrangea with lime flowers that turn ivory. Shows well anywhere. Tolerates full sun and part shade. - Mature height 90 - 125 cm \$49.95

Little Lime Punch – This hydrangea can feature blooms in four different colors! Starting with lime green, fading to near white, then into a soft pink blush that deepens to a lovely raspberry tone. Perfect, compact and easy to manage, A real showpiece. - Mature height 125 cm \$49.95

Moonrock – Moonrock will become your favorite hydrangea! Dense flowers in creamy white and lime green centers bloom on sturdy new wood every year, non-stop until early fall. Green foliage turns to yellow, orange and red after first frosts. - Mature height 125 cm \$49.95

PeeGee or Grandiflora – Showy with lots of large round blooms that turn from white to pink. - Mature height 80 cm \$49.95

Quickfire – Often blooms earlier than other hydrangeas. Flowers open pure white then turn pink to dark rosy pink in fall. Leaves turn gold and burgundy in autumn. - Mature height 150 cm \$49.95

ORNAMENTAL SHRUBS

MOCK ORANGE

Blizzard – A Boughen's favorite. Exceptionally cold hardy; developed in Alberta with its clusters of beautifully scented white flowers. - Mature height 125 cm \$42.95

Snow Dwarf – Known for its clusters of intensely fragrant, double white flowers. Perfect for hedges or borders. - Mature Height 80 cm \$42.95

Snowbelle – This compact mounded flowering shrub is covered in spectacular sweet-scented double blooms in early summer. Very adaptable. - Mature Height 150 cm \$42.95

NANNY BERRY

Nanny Berry - A hardy shrub with upright growing habit, shiny green leaves and white flowers that become blue-black berries that attract birds. Can be used in jellies and jams. - Mature Height 4 m \$42.95

NINEBARK

Centre Glow – A cross between Darts Gold and Diablo, this shrub's copper colored foliage turns a very pretty red in summer. - Mature Height 125 cm \$42.95

Darts Gold – Contrast shrub. Golden spring foliage turns lime in the summer. Bright foliage with showy clusters of blooms, also attractive in winter. - Mature Height 150 cm \$42.95

Diablo – The stunning deep purple foliage of this versatile shrub makes it a standout in the garden. Creamy white flowers in spring. - Mature Height 175 cm \$42.95

Satin Chocolate – Rich, deeply cut burgundy-chocolate foliage makes this plant a standout. White flowers in spring. Fall colors intensified with fall. - Mature Height 150 cm \$42.95

Summer Wine – Blissfully easy to care for with fast-growing foliage in a graceful wine color that features late spring pale pink blooms. Highly pest resistant. - Mature Height 150 cm \$42.95

ORNAMENTAL SHRUBS

PINK FLOWERING ALMOND

Pink Flowering Almond - A very popular flowering spring tree displaying light pink flowers before the leaves appear. Grows best in light shade to full sun. Very hardy. - Mature Height 125 - 150 cm \$48.95

POTENTILLA

Dense shrubs with small leaves and showy flowers - Mature Height up to 90 cm \$42.95

Abbotswood - white
Coronation Triumph - bright yellow
Dakota Sunspot - gold
Gold Drop - gold
Gold Star - golden yellow
Goldfinger - vibrant yellow
Mango Tango - orange/red
McKay's White - white
Pink Beauty - clear pink
Yellow Gem - bright yellow



PURPLE LEAF CHERRY

Purple Leaf Cherry (Cistena Cherry) - Bright pink flowers with dark purple leaves last all season. - Mature Height 125 cm \$42.95

ROSE TREE OF CHINA

Rose Tree of China - Early bloomer with double pink blooms along the branches. Showy and very popular. - Mature Height 150 cm \$48.95

SEA BUCKTHORN

Sea Buckthorn - Large growing, does well in full sun. Orange/yellow fruit. - Mature Height 200 cm \$42.95

SNOWBALL

Snowball - Large snowball-like flowers in June with leaves like a cranberry. - Mature Height 150 cm \$42.95

SNOWBERRY

Snowberry - Small white flowers are followed by white/yellow fall berries. - Mature Height 90 cm \$42.95

ORNAMENTAL SHRUBS

SPIREA

Dense-growing shrubs with small leaves and lots of showy flowers. - Mature Height 30-80 cm \$42.95

- Anthony Waterer** – rose pink
- Bridal Wreath** – dainty white
- Flaming Elf** – Pale pink flowers
- Firelight** – bright red to yellow
- Flaming Mound** – flaming red to yellow
- Froebelii** – hot pink
- Golden Princess** - pink
- Goldflame** – bronze-red to copper
- Goldmound** – golden yellow to lime
- Little Princess** – pink \$42.95
- Lemon Princess** - bright pink \$42.95
- Magic Carpet** – deep pink in summer \$42.95
- Red or Darts Red** – red \$42.95
- Snowmound** – white \$42.95



HARDY ROSES

- Alexander Mackenzie** – deep red \$43.95
- Always Together (miniature)** – bright red \$43.95
- Aurora Borealis** – sunset pink - \$43.95
- Bill Reid** – yellow \$43.95
- Bugnet - Therese** - pale pink \$43.95
- Campfire** – red/yellow/pink \$43.95
- Canadian Blooms** – pink \$43.95
- Champlain** – red \$43.95
- Chinook Sunrise** – coral pink \$43.95
- Double de Coubert** - white \$43.95
- Felix Leclerc** – climbing deep pink to red \$43.95
- Frontenac** – deep pink \$43.95
- George Vancouver** – reddish orange to deep pink \$43.95
- James Galway** - pink centers \$43.95
- John Cabot** –climbing - red \$43.95
- J.P. Connell** – lemon yellow \$43.95
- Martin Frobisher** -soft pink \$43.95
- Morden Blush** - Light Pink \$43.95
- Morden Centennial** - Pink \$43.95
- Morden Fireglow** - Orange Red \$43.95
- Morden Snow Beauty** – White \$43.95
- Morden Sunrise** - Yellow Blend \$43.95
- Native Prickly rose**– true pink \$43.95
- Never Alone -Red/White** \$43.95
- Nicholas** – bright red \$43.95
- Winnipeg Parks** – deep pink \$43.95
- Yukon Sun** - bright yellow \$43.95



ORNAMENTAL SHRUBS

HARDY LILACS

Bloomerang – Blooms several times throughout the summer, usually in May—a darker bloom, and July and sometimes August with a darker color. Low maintenance. - Mature height 125- 150 cm \$41.95

Charles Joly – A double red/purple French non-suckering lilac. - Mature height 3 m \$41.95

Donald Wyman – Preston lilac. Purplish-lavender flowers bloom mid-June in dense, sturdy, upright growth. Non-suckering. - Mature height 3 m \$41.95

Dwarf Korean – Prolific reddish-purple buds open into masses of lavender-light pink flowers with a strong scent. - Mature height 120 cm \$41.95

James McFarlane – Blooms later than other varieties. Pink flowers attract butterflies and hummingbirds. Makes a great hedge or screen. Rich green foliage. - Mature height 2.5 - 3 m \$41.95

Japanese Lilac Tree – Aka Ivory Silk. Gorgeous creamy flowers bloom in early July. Its lovely fall foliage makes this tree very popular. - Mature height 5 to 6 m \$78.95

Little Leaf – A dense, wide-growing lilac with small leaves and fragrant deep pink flowers. - Mature height 1.5 m \$41.95

Madame Lemoine – This old favorite is a hardy hybrid French lilac with white flowers. - Mature height 3 m \$41.95

Minuet – Showy clusters of purple buds become lightly scented lavender blooms and rise above the foliage in late spring. - Mature height 2 m \$41.95

Miss Canada – Brightest pink of all lilacs. Vigorous grower, non-suckering. Blooms mid- June. - Mature Height 2.5 m \$41.95

Miss Kim – A late blooming dwarf lilac with very fragrant lavender flowers. Good fall burgundy color. - Mature height 2 m \$41.95

Royalty Preston – A low maintenance shrub that attracts butterflies. Dark purple buds turn to lighter flowers. Turns yellow in fall. - Mature Height 2.5 m \$41.95

Sensation - A mid season bloomer noted for its large trusses of purple-red florets edged in white. - Mature Height 3 m \$41.95

Villosa – A low-suckering, large and cold hardy lilac with light pink blooms. Great for windbreaks or hedges. - Mature Height 4 m \$24.95

CLIMBING VINES

Beta Grape – A cross between Manitoba native grape and Concord grape. The blue-black fruit makes excellent juice or jelly. \$42.95

Concorde Blue Ice - A hardy, often seedless variation of the classic blue-black Concord grape, known for its sweet, tangy flavor, making it excellent for juice, jelly, and fresh eating. \$42.95

Minnesota #78 Grape – Sweet fruit from this vine is tasty fresh or in jellies. \$42.95

Valiant Grape – Early clusters of Valiant's blue fruit makes delicious wine, juice and jelly. \$42.95

Engleman Ivy – A very vigorous vine with spectacular fall cover. Ideal for trellis or fence. \$42.95

Virginia Creeper – The hardiest vine means you can count on this creeper for years. It's the only one to use for permanent cover. Green leaves turn a rich scarlet red in fall. \$38.95

BARE ROOT MULTI-PACKS

Bare Root items only available until May 30, annually

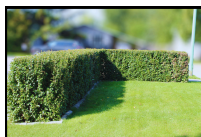
ASH

European Mountain Ash 5 pack – A popular ornamental. White flowers clusters in spring become red-orange berries to attract song birds. - Mature height 6 m - Purchase size \$64.95

Ash – Green 5 pack – Very hardy and tough tree with excellent color. - Mature height 12 m - Purchase size \$74.95

COTONEASTER

Cotoneaster (pronounced kuh-TONY-aster) 5 pack – Very popular for hedges in residential areas. Small pink blooms become dark purple berries. Shiny dark leaves turn to orange/red in fall. Plant 50 cm apart. Trim once a year. - Purchase size \$59.95



DOGWOOD

Red Osier Dogwood 5 pack - A truly hardy native shrub. Green leaves with red bark. - Mature height 2-3 m \$74.95

BARE ROOT MULTI-PACKS

LILAC

Villosa – 5 pack – 2 year plants – Hardy with light pink blooms, non-suckering. Beautiful breakdown or hedge on acreages. Also suits urban settings. \$74.95

SOLD OUT

MAPLE

Manitoba – 5 pack – 2 year plants Native shade tree thrives in a boulevard or shelterbelt. - Mature Height 15 m \$74.95

POPLAR (Hybrid Cottonless)

Visit our website for additional information on mature heights and other details on these varieties.

Assiniboine 5 pack - Fast growing with horizontal branching. - Mature Height 20 m \$74.95

Northwest 5 pack - Fast growing, wide, hardy and is long-lived. - Mature Height 18 m \$74.95

Prairie Sky 5 pack - Narrower upright growing form. - Mature Height 15 m \$74.95

Sundancer - 5 pack - Fast growing, columnar, disease resistant. Less invasive root system than older poplars. - Mature Height 12 m \$74.95

Tower – 5 pack – A fast grower, narrow and cottonless. - Mature Height 10 m \$74.95

SIBERIAN CRAB

5 pack – 2 year plants – Abundant white spring blossoms are followed by fruit attracting birds, often grouse. Great pollinator for apple and crabapple. - Mature Height 6 m \$42.95

SIBERIAN PEAR

5 pack – 2 year plants – Strictly ornamental. Good pollinator for other pears. White blooms produce inedible fruit. Mature height \$42.95

WILLOW

Golden 5 pack – Golden colored branches remain lovely even after the leaves fall off. Mature Height 15m. \$49.95

Laurel 5 pack – Quick growing with dark green shiny leaves. Mature Height 10m. \$49.95

FRUIT TREES

Rules on pollination – any apple or crabapple will cross-pollinate with any other apple or crabapple as long as they are of different kinds, meaning you must have two trees of different varieties.

APPLES

5'-7'

Battleford – Hardy yellow apple splashed with a red blush on a smaller tree. Tart taste with firm texture. Great for eating and cooking. \$94.95

Dexter - Cold-hardy, disease-resistant variety known for its sweet, crisp, amber-gold apples with red blush, excellent for fresh eating, cooking, and baking \$94.95

Fall Red – It tastes like a McIntosh apple, but Fall Reds are super hardy and disease resistant. A vigorous grower that cooks up well, too. \$94.95

Gloria - Canadian-developed variety known for its cold hardiness, crisp texture, and sweet, slightly spicy "strawberry" flavored red-speckled fruit \$94.95

Gemini – Medium sweet, crisp and juicy apples that are yellow-green to mostly red. Known for its edible qualities. \$94.95

Goodland – From Manitoba. Moderately sweet fruit with a creamy-green skin and red blush. The fine texture makes it perfect to eat or puree. \$94.95

Harcourt - Canadian-developed apple variety known for its crisp, juicy, red-striped fruit with white flesh, excellent for fresh eating, baking, and juicing. \$94.95

Heyer 12 – A very hardy drought resistant tree. Apples are medium-sized with coarse flesh texture. Good for eating but fantastic in pies. No need to remove the peel! \$94.95

Honeycrisp – Perfect eating apple—fruit is aromatic and sweet with an explosively juicy crisp texture. Scab resistant. \$94.95

Norland – Produces greenish apples with a red blush and white flesh. They have a sweet taste and crisp texture. Fantastic all-purpose apple. \$94.95

Odyssey – These large round green apples have a scarlet blush and white flesh with an excellent sweetness and crisp texture. They store well in to the winter. \$94.95

Parkland – An extremely hardy quality apples that can be grown in boreal regions where few other apple trees will thrive. Yellowish-green peels with red striping, crisp and juicy white flesh with a pleasant tart taste. Parkland apples are the leading variety in Alaska! \$94.95

Prairie Magic – Fantastic flavor and Canadian hardiness; said to be one of the best-flavoured hardy varieties available. Succulently sweet crisp white flesh is great for fresh eating, cooking and storage. Good disease resistance. \$94.95

Prairie Sensation – Cold hardy variety from the U of S! Juicy crisp, sweet flavor from large, firm, green/red apples. \$94.95

September Ruby – Extremely hardy tart apple that's great for eating fresh, in pies, but outstanding for juicing. \$94.95

Red Sparkle - High quality multi-purpose apple that can handle the worst of prairie winters \$94.95

Trail - Hardy, crisp, sweet-tart variety developed in Canada, excellent for fresh eating or cooking \$94.95

FRUIT TREES

CRABAPPLES

Dolgo – Great ornamental—blossoms heavily and bears lots of fruit with a vibrant flavour that's tangy and delicious right off the tree or in homemade jelly. Good pollinator for apple trees. \$94.95

Kerr – Very sweet, large, crisp and juicy fruit is popular with kids for fresh eating or jelly. Kerr is very hardy, productive and disease resistant. \$94.95

Rescue – A favorite Saskatchewan sweet crabapple we're often asked for. The tree is extremely hardy. The fruit is great for cooking or fresh eating but does not store well. \$94.95

PLUMS

Brook Gold – Deliciously sweet yellow-fleshed freestone plum; for fresh eating or preserves. \$98.95

Brook Red – Red skin and a golden interior. The fruit is juicy, rich, slightly tangy. Also good for cooking and baking, but be sure to remove the sour peel. \$98.95

Tecumseh – Dark purple/red, juicy fruit, good for eating fresh, in jam or jelly. \$98.95

Pembina – Hybrid of Japanese & Canadian plum; the hardiest prairie plum. Large red plums have a wonderful sweet and juicy flavour. Great addition to the home orchard. \$98.95

Native – Strictly ornamental. Good plum pollinator. \$98.95

CHERRY PLUMS

Cherry plums will only cross-pollinate with other cherry plums of a different variety, with a Canada Plum, or with a Western Sandcherry.

Mustang – Sweet cherry plums are about one inch in diameter, deep red, very sweet and have a strong cherry taste. \$94.95

Opata – Semi-freestone. Flesh is firm and juicy, sweet with a hint of acidity. Great fresh and decent for preserves. \$94.95

FRUIT TREES

PEARS

Two different varieties of pears must be used for cross-pollination. Purchase size – 125-150cm. (5'-6')

Early Gold – Pears are similar to Ure but matures earlier. Fruit has hints of gold and white flesh with a sweet taste and a crisp texture. Great for eating, cooking and canning. \$98.95

Golden Spice – The fruit is small and yellow with a slight blush, sweet flavor and crisp texture. Good eating fresh, cooked or canned. \$98.95

Navigator – This is an ornamental pear prized for its lovely red fall foliage. \$98.95

Prairie Welcome – This green-yellow fruit ripens in early fall. \$98.95

Paul – Medium-sized, yellow pears that are great for eating fresh or preserved. \$98.95

Ure – From Morden Research Station. Round yellow fruit is good fresh or for processing. \$92.95

Siberian – Strictly ornamental; a pollinator for other pears. \$68.95

BERRIES

For best results plant two or more of the same variety.

ASPARAGUS

ASPARAGUS - 5 pack 2yr. bare root \$19.95

BLUEBERRIES

Buy quantities of 5 or more and receive 10% off

Chippewa – Upright 3-4' shrub with large dark blue fruit ripens earlier than most. Berries have a sweet taste and a juicy texture. \$31.95

North Blue - Low-growing, compact plant produces crops of delicious, dime-size, dark-blue berries \$31.95

North Country – 2' cold hardy bush with berries of the same exceptional taste as a wild blueberry. \$31.95

Polaris – Good early to mid season producer of very sweet blue round berries with purple undertones on a 3-4' plant. \$31.95

Patriot – Up to 6' tall and largest fruit of all early season blueberries for fresh eating, baking and preserving. \$31.95

HASKAP / HONEYBERRY

The taste of these fruits are mostly a mix of blueberry and raspberry. Two plants which flower at the same time are required for pollination.

Aurora – Popular variety. Very productive with large, sweet berries with a little tartness which are easily picked. Great pollinator for Borealis. \$38.95

Boreal Blizzard – Berries are meaty and heavy, more than twice as heavy as Tundra or Borealis. Excellent choice for home growers and U-picks. It pairs well with other Boreal varieties, particularly Boreal Beast. \$38.95

Borealis – Large firm fruit with excellent flavour. Compatible with Aurora, Berry Blue, Boreal Blizzard and Honeybee. \$38.95

Honey Bee – Pollinator for Borealis, Tundra and Indigo series. Produces tarter fruit and holds its fruit longer than Borealis and Tundra varieties. \$38.95

Tundra – Firmest fruit of all the haskaps. Great taste. Honeybee or Berry Blue pollinators, \$38.95

BERRIES

CHERRIES

Branched Trees 4-6'

Carmine Jewel – University of Saskatchewan product produces red cherries with small pits that are good for eating, pies and wine making. The hardiest of the dwarf sour cherries. \$78.95

Cupid – Largest fruit of all the sour cherries. Dark red – good for eating or processing. \$78.95

Crimson Passion – The sweetest sour cherry fruit. Great for fresh eating and homemade cherry pie! \$78.95

Evans – Cold hardy prairie grower for over 50 years. Heavy producer of large fruit that is good for eating, baking, jams and wine. \$78.95

Juliette – Dark red with red flesh that has a sweet taste and firm texture. Multi-use cherry. \$78.95

Romeo – Rich dark red to black cherry that's great for eating or processing. Best juice producer in the romance series. Non-suckering. \$78.95

Valentine – Cherries have a tart taste and firm texture; most often used for cooking, baking, preserves, drying and canning. \$78.95

Sandcherry – Great pollinator for cherry plums. Small, round, tart fruit is most used in preserves. \$78.95

Nanking – Good for borders, hedges, windbreaks. Produces lots of marble-sized red fruit for fresh eating or jellies. \$58.95

CHOKECHERRY

Native variety - Large clusters of black fruit that's great for jelly or juice. Attracts birds. \$42.95

CURRENT

Black – Shrubs produce strong aroma and large black berries. Great for preserves, syrups, wines and dyes. \$41.95

Red – Pearl-sized berries, they are less robustly flavoured than black currents. Called superfruits for their antioxidants. Preserves are often paired with meat. \$41.95

GOOSEBERRY

Gooseberries - Large fruit good for jellies and pies. \$42.95

BERRIES

HIGHBUSH CRANBERRY

Highbush Cranberry - Bright red, juicy, preserves, jams/jellies, sauces, etc., which make delicious condiments for meat and game. \$42.95



PINCHERRY

Native - Small bright red fruits used in jellies or for juice. Attracts birds. \$44.95

BLACK RASPBERRY

Wyoming - Raspberry/blackberry combo. A vigorous grower. Fruit is excellent fresh, processed or in baking. \$34.95

Aubin Black - Sweet, firm, glossy black fruit, great for eating, freezing or jam. \$34.95

BLACKBERRY

Chester Blackberry - a popular, thornless variety known for its large, sweet, glossy black fruit, excellent winter hardiness, and vigorous growth, ripening in late summer. Good for fresh eating, jams, and pies. Needs full sun & well-drained soil \$34.95

RASPBERRY (Bare Root Packs)

Boyne 5 Pack - Very large, sweet, red and juicy fruit. \$28.95

Encore 5 Pack - Large fruit with great flavour. Nearly spineless. \$28.95

Red River 5 Pack - The berries have a sweet taste and juicy texture. Delicious fresh. \$28.95

Thornless 5 Pack - Very good sweet red berries and no thorns! \$28.95

HAZELNUT

Native Hazelnut- Produces round edible nuts. \$44.95



BERRIES

RHUBARB

Native - Produces large red stalks that are sweet and juicy. Makes a delicious rhubarb pie. \$19.95

SASKATOONS

Honeywood - Great yields of large juicy fruit on hardy bushes. Excellent flavor for fresh eating or pies and jam. Birds love the fruit, too! \$31.95

Martin - Large, sweet, flavorful berries, uniform ripening, and vigorous upright growth. Produces fruit in early summer. Prized for eating fresh, in pies, or jams, with edible berries tasting nutty with almond hints. \$31.95

Native - An abundance of smaller berries. Enjoyable fresh, frozen or processed. \$31.95

Northline - Famous for its great tasting fruit. Terrific for fresh eating or cooking. \$31.95

Pembina - Large purplish-blue berries, good eaten fresh or used in pies and jams. \$31.95

Regent - Very showy bloomer. Heavy producer of pea-sized fruit. \$31.95

Smokey - Exceptionally large sweet berries that ripen all at the same time. Excellent for fresh eating, jams and desserts. A very ornamental shrub with amazing fall colour. \$31.95

Thiessen - One of the most productive saskatoon varieties. Very large fruit is great for pies, preserving or eating fresh. \$31.95

STRAWBERRIES

These bare root plants are alive when purchased and will continue to grow with proper planting and adequate moisture. There is no warranty on strawberries.

Fort Laramie - Everbearing - 25 Packs - Produces two heavy crops; one at the end of June, another in September. One of the sweetest everbearers. Berries are large and bright scarlet red. \$49.95

Seascape - Everbearing - 25 Packs - Delicious large cherry red berries with a sweet taste and firm texture throughout the growing season. \$49.95

XL Seascape - Everbearing - 25 Packs - Delicious large cherry red berries with a sweet taste and firm texture throughout the growing season. \$59.95

PERENNIALS

PERENNIALS

Old Fashioned Pink – Long stems of heart-shaped pink blossoms. A longtime favourite. \$22.95

Old Fashioned White – Easy to grow, bushy mound of fern-like foliage with long arching stems of white, dangling heart-shaped flowers. An excellent addition anywhere. \$22.95

Old Fashioned Red – a compact variety with dark green leaves and fragrant deep red flowers that hang from stems. \$22.95

Native Fern – Does well in intense shade and moist conditions. \$14.95

Peonies – Pink, Red or White. \$19.95

Fern Leaf Peony - Unique, early-blooming peony known for its delicate, feathery foliage and small, usually red, single or double flowers. 12-18" tall and requires full sun and well drained soil \$59.95

Silver Mound – Soft feathery foliage forms a compact, silky, cushion like mound. Use as edging, rock gardens, or as a filler plant for hot dry areas. A long-time favourite. \$19.95

Blue Fescue Grass – Colorful ornamental grass with icy blue foliage. It is drought-tolerant ease of care and its fine texture. A good companion for more dramatic plantings. \$19.95

Karl Foerster Grass – A cool season grass that puts out most growth in cooler spring and fall temperatures. Maintain good color in summer. Cut back in spring leaving 1/3 of plant. Mature height – 125-150 cm. \$19.95

EVERGREENS

CEDARS

Brandon – Pyramid – Grows in a slender, upright manner. Often used between two windows or a door and a window. Height at purchase 5-7' \$99.95

Globe – Grows naturally in a round dense shape that seldom needs trimming. #2 container \$41.95

Dwarf Globe – A very compact form of the globe above #2 container \$41.95

JUNIPERS

Blue Chip Juniper - Popular, low-growing, evergreen shrub with dense, silvery-blue foliage and spreading habit, making it an excellent deer-resistant groundcover for slopes, rock gardens, and borders, requiring full sun and well-drained soil. \$38.95

Blue Pfitzer - Hardy, fast-growing evergreen shrub known for its attractive bluish-green foliage that turns purple-blue in winter. Dense, spreading, cascading habit suitable for groundcover, hedges, or accents, thriving in full sun and well-drained soil. \$38.95

Buffalo – Olive green needles; ground-hugging, hardy with blue berries. \$38.95

Calgary Carpet – A superior evergreen groundcover with a very low spreading habit and attractive soft green foliage. Used on slopes for groundcover and erosion control. \$38.95

Hughes – Superb silver blue fine foliage. Low mounding, spreading habit. \$38.95

Savin – Semi-vase form, mid-size in green tones. \$38.95

Witchita Blue Upright – Densely arranged bright silver foliage on widely pyramidal form. #5 container \$58.95

EVERGREENS

SPRUCE

Black Hills White Spruce

5 gal. - approx 30" tall \$74.95

25 gal. - approx 6' tall \$499.95 - \$525.99

Colorado Spruce

5 gal. - approx 30" tall \$74.95

Fat Albert Blue

7 gal. - approx 4' tall \$219.95

15 gal - approx 4-5' tall \$249.95

Globosa Spruce - mounding globe spruce. Dwarf, flat-topped and densely branched. approx 18-21" tall \$119.95

Weeping White Spruce 4' tall \$259.95

Baby Blue Eyes Blue Spruce 7 gal 4' tall \$219.95



PINE

Mugho – Hardy low-growing pine with long bright needles.

Prune once a year. #2 container \$41.95

TIPS & HELPFUL HINTS

PLANTING: Trees and shrubs are living and must be handled with care at all times. Never allow plant roots to dry out, whether bare root, balled with burlap or containerized. Keep out of sun and wind until immediately before planting. Dig a hole big enough to accommodate the roots and plant, about two inches deeper than the soil mark on the trunk. When refilling the hole, be sure to lightly pack soil in around roots, leaving a small basin shape for water-holding purposes.

PLANTING BARE ROOT: Bare root trees must be planted when the tree is dormant, which usually means early spring, or late fall. The grower protects the roots by wrapping them in damp moss and then covers the roots, ensuring they stay hydrated while being transported. But they can only remain so for a short time. If you must store before planting, place bare roots in a cool, dark place. If they encounter heat and sun, they'll emerge from dormancy, become stressed and may die without soil to protect and nourish their roots. To avoid risking their buds opening--a sign they're emerging from dormancy, plant your bare roots as soon as possible. Windy, hot, very sunny days can cause the roots to dry out too quickly or trigger the tree out of dormancy. Leave the bare root covered in the shade or a cool dampish basement while you dig the holes. Then removing one tree from its protection, set it in the hole. Gently pack the soil around it, forming a basin-like shape at the base of the tree. Continue until all are planted. Water as needed and enjoy your trees for many years.

PLANTING POTTED PLANTS: Containerized trees, shrubs and evergreens must be planted with roots intact, meaning you'll need to let your pots dry out a bit first before removing the pot. The entire root ball with dirt attached must emerge and go into the hole because within the soil are the tiny spider roots which the plant needs to get established in its new home. Transplanting is a shock to the plant so fertilizing should not be done immediately after planting.

PLANTING HEDGES: To ensure your hedge grows uniformly, take extra care with your planting. Use a stretched line as a guide for placement, leaving enough room so plant roots can spread out. Set plants deep enough so lower branches touch the soil.

TIPS & HELPFUL HINTS

WATERING: The success or failure of your trees and shrubs is in direct relation to the amount and frequency of water they receive. A depression at the base will allow water retention. Water newly planted stock two or three times a week during hot summer days, but there's no need to over-water. Do water well last thing in the fall.

WEED CONTROL: Lack of vigor in trees and shrubs may be due to competition from weeds. If planted in a lawn, create a soil area 2-3 feet around the tree that's free of weeds and grass. Landscape fabric and crushed rock are helpful in controlling weed growth.

FERTILIZER: We do not recommend fertilizing newly planted trees and shrubs as this may shock them after transplanting. Fertilize the following year with an all-purpose fertilizer.

SUNSCALD AND WINTER BROWNING OF

EVERGREENS: This is caused by the bright sun reflecting off winter snow in February and March and is more likely to affect newly planted evergreens. Heavily water all evergreens in the late fall. For the first winter, loosely cover all cedar trees in burlap because roots may not be fully established.

WILDLIFE DAMAGE AND PROTECTION: Broken or damaged branches due to elk or deer should be pruned. If the branch is 1" diameter or larger, cover the fresh cut with pruning paste or spray to protect the branch from dying out.

FOOD FORESTS

If you are planning a food forest, feel free to talk to us well ahead of the planting season to allow time to ensure your preferred stock will be available.

GIFT CERTIFICATES

Perfect for a birthday, wedding, anniversary, house warming or as a thank you, gift certificates are available in any dollar value. Provide us with the name of the recipient, the name of the sender and the amount you wish to give and, with payment, we can mail the certificate to the giver, the receiver, or you can pick it up at our nursery.



MEMORIAL TREES

An amazing way to honor and commemorate a loved one's passing. We'd love to help you with the appropriate selection and, upon occasion, we can also assist in planting your memorial tree. Just ask.

Memorial trees offer beauty, longevity, and meaning, with popular choices including Oaks (strength, wisdom), Maples (change, family, vibrant fall color), Dogwoods (renewal, hope with spring blossoms), and evergreens like Spruce or Pine (endurance, eternal life). Flowering trees like Cherry Blossoms are cherished for their fleeting beauty and color, while graceful Weeping Willows offer comfort and solace.





SUBSTITUTIONS

Should the requested item be unavailable, we will work to substitute an acceptable alternative for your order.

WARRANTY

Our nursery stock and evergreens are grown and raised with the utmost attention to detail. These plants are healthy and actively growing when sold and, with proper care will continue to flourish. Please ask us if you have questions around care and planting.

TAXES & FREIGHT

GST and PST will be added to your order if you reside in Saskatchewan. If we are shipping to you out of province, only GST will be added. We also charge for packaging and freight according to each order. No C.O.D. orders will be accepted.

TERMS & CONDITIONS

All orders must include payment by either cash, eTransfer, Visa, Mastercard or debit card.

SHIPPING BY COURIER

Pickup, shipping and delivery is the responsibility of our customers. Boughen Nurseries Ltd. may arrange for shipping, but all associated costs, including packaging and handling, will be added to your order. A deposit on shipping may be charged.

Packaging will be charged on all orders.

Approx tree and shrub size conversion.

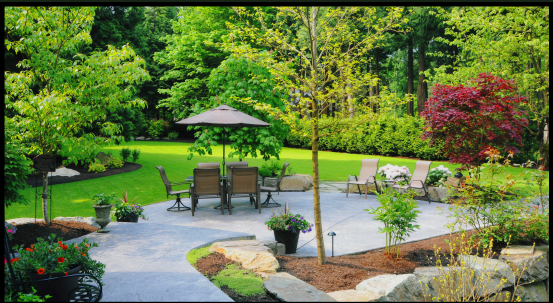
30 cm = 12"	80 cm = 30"	150 cm = 5'
40 cm = 15"	90 cm = 36"	175 cm = 6'
50 cm = 18"	100 cm = 40"	1 metre = 3'
60 cm = 24"	125 cm = 4'	3 metre = 9'

PLACE YOUR ORDER NOW FOR SPRING PICKUP OR SHIPPING

Trees and shrubs add greatly to our environment, providing shade, food, beauty and privacy. Trees and shrubs also filter dust and pollution, take in carbon dioxide and release oxygen. Spruce trees planted on the north side of your house can cut heating costs. Deciduous trees on the east, west and south side offer summer shade, as well as light and warmth in winter. Many varieties of trees and shrubs produce fruit that remains well into winter and offers food for our wintering birds. Potted stock is available from our nursery all season.

Packaged stock is only available until June 30th. Boughen Nurseries sells other plants and trees that may not be listed in our catalogue. Landscape consulting, memorial trees and supplying food forests are just some of the services we provide. If you don't see what you need here, please ask us.

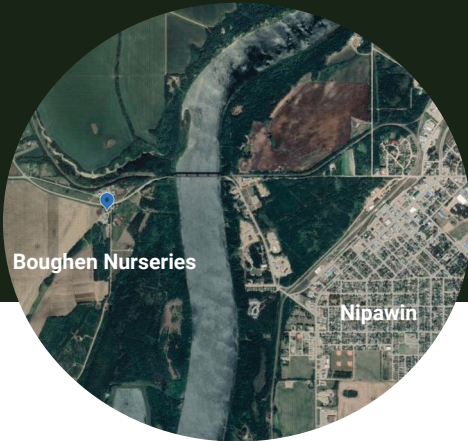
We'd love to help.



*Making greener
spaces everyday*

BOUGHEN NURSERIES LTD.

EST 1937



LOCATION

Old Highway 35 West
PO Box 1955 Nipawin, SK S0E 1E0

PHONE

306-862-5313

EMAIL

trees@boughennurseries.com

WEBSITE

www.boughennurseries.com

Visit our website for current hours of
operation and order forms



Follow Us

